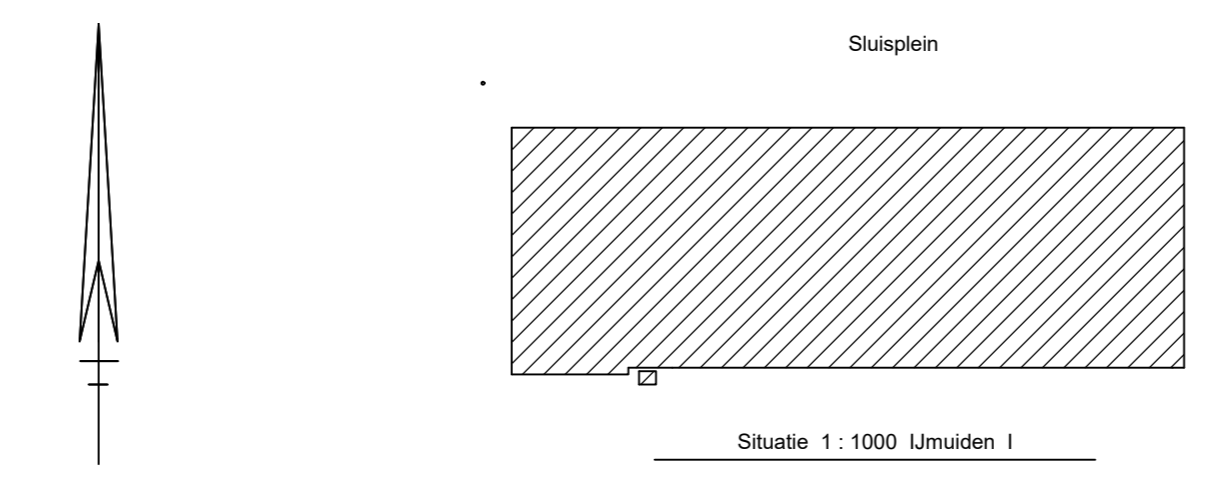
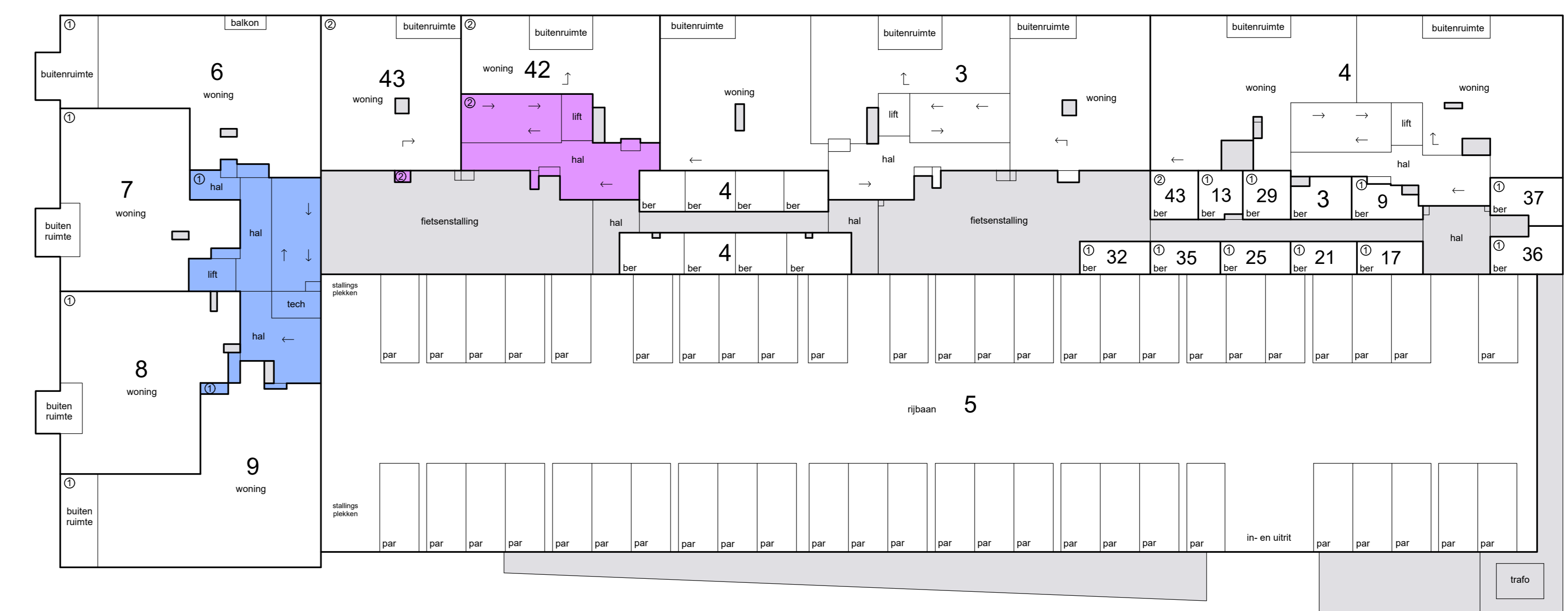


- Schaal 1 : 200
- = Gemeenschappelijk hoofdsplitsing
 - = Gemeenschappelijk ondersplitsing A1
 - = Gemeenschappelijk ondersplitsing A2
- Tekening bestaat uit 3 bladen
 Blad 1



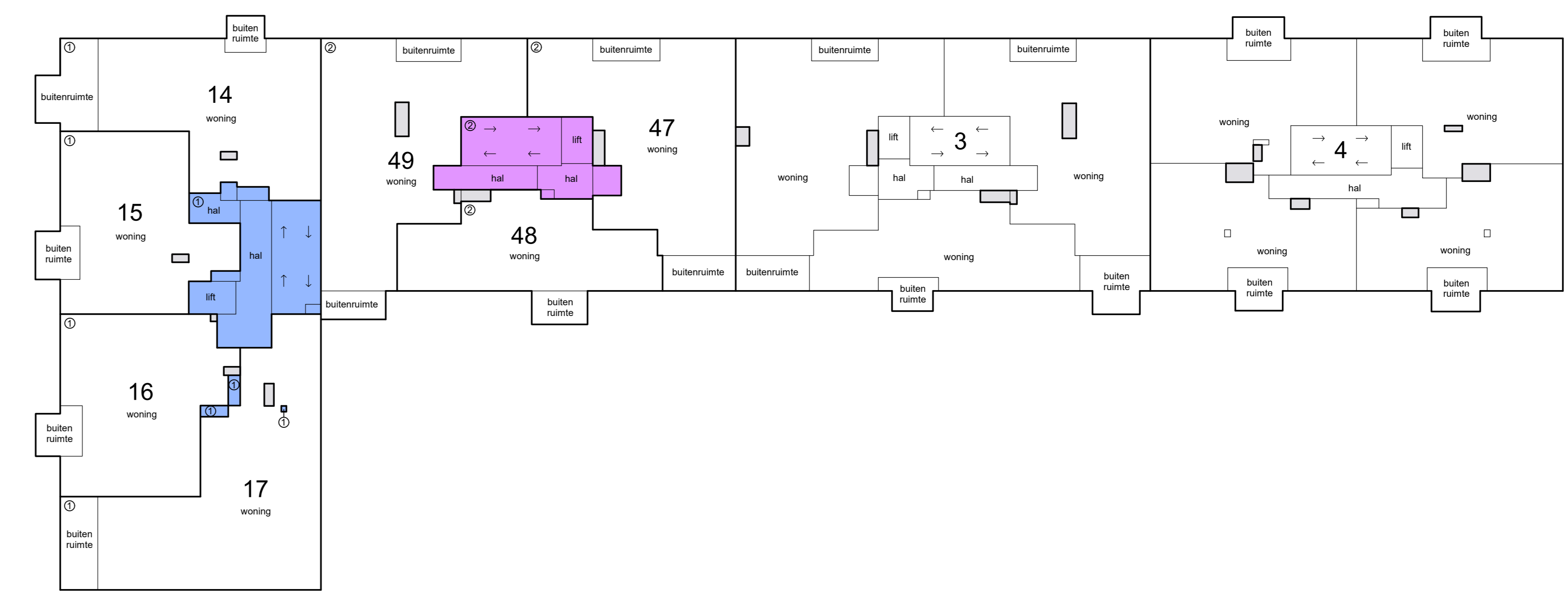
begane grond



1e etage



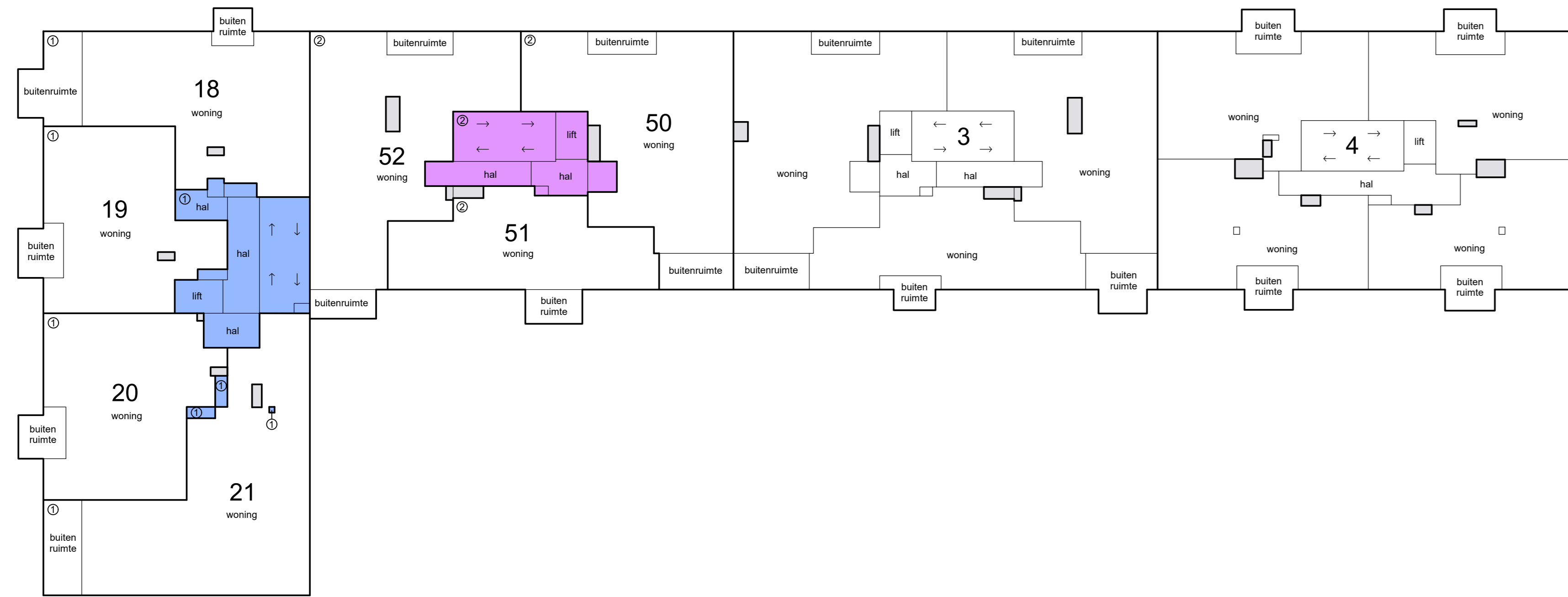
2e etage



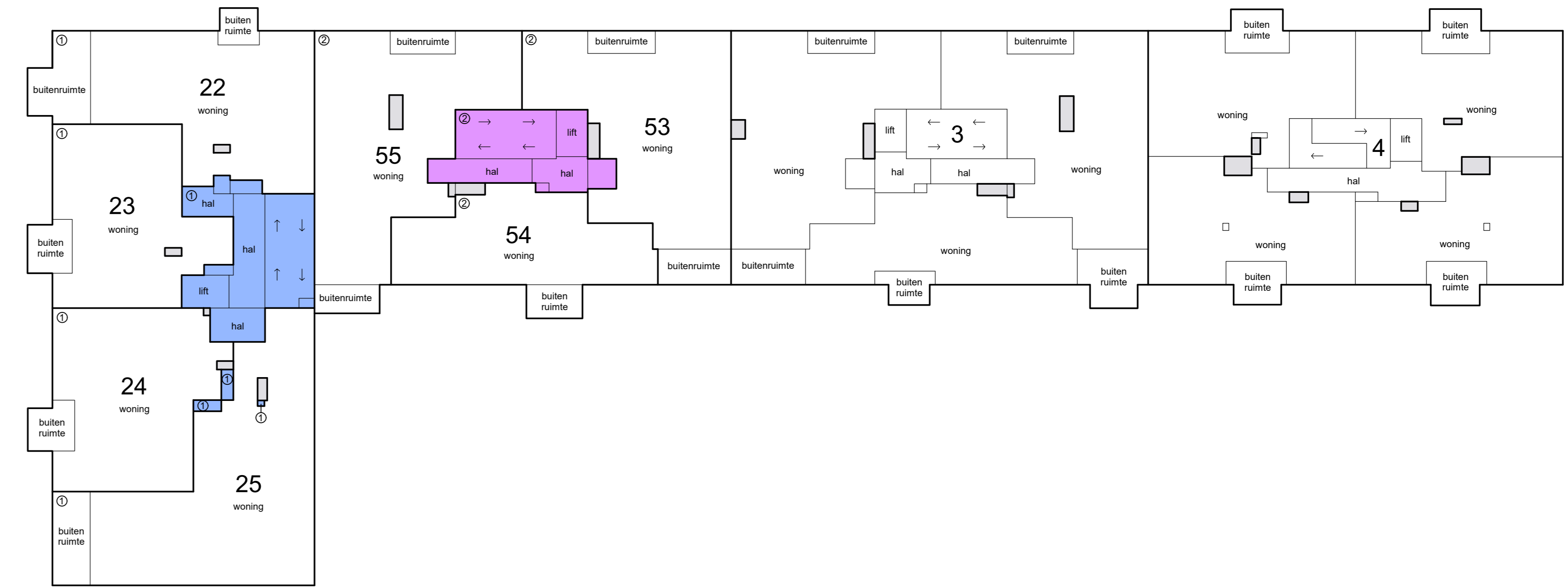
3e etage



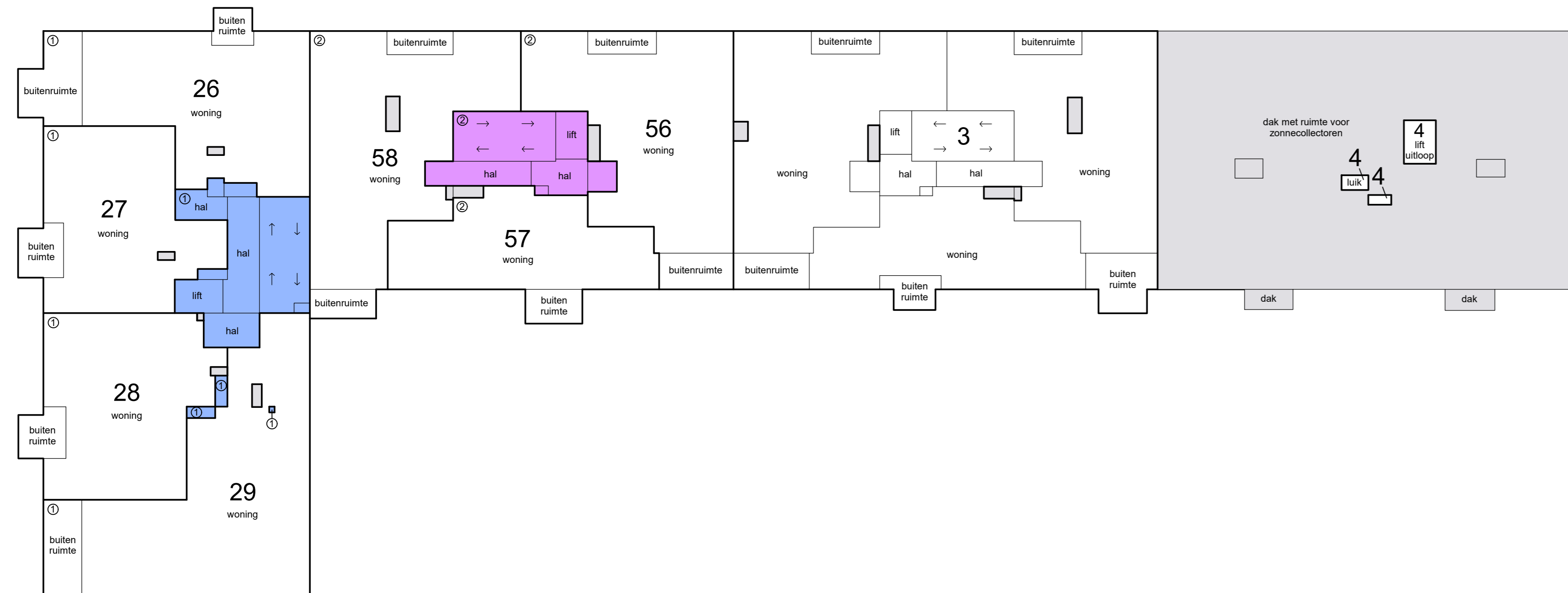
- Schaal 1 : 200
- = Gemeenschappelijk hoofdsplitsing
 - = Gemeenschappelijk ondersplitsing A1
 - = Gemeenschappelijk ondersplitsing A2
- Tekening bestaat uit 3 bladen
 Blad 2



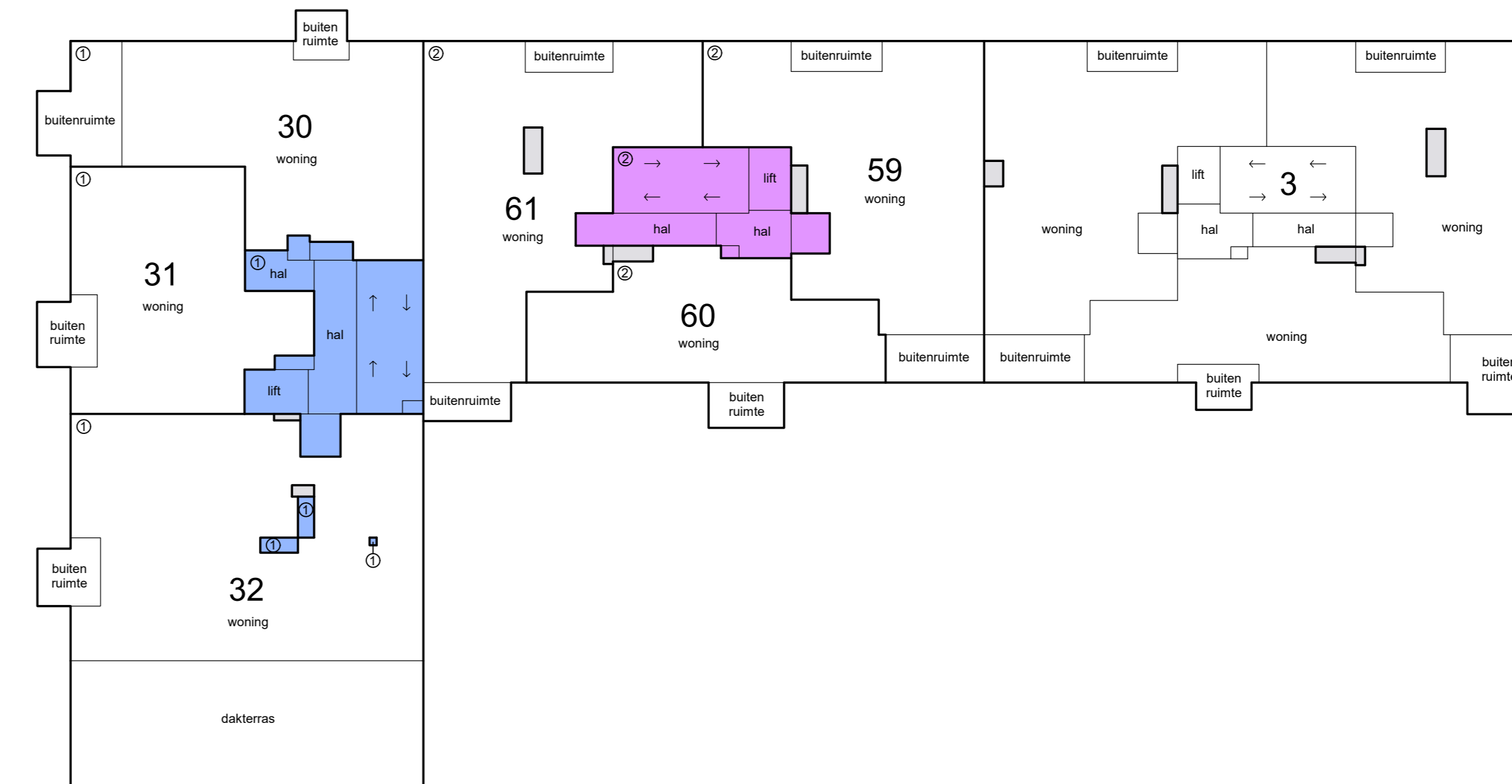
4e etage



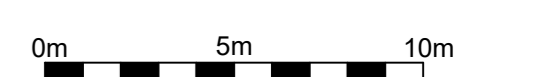
5e etage






6e etage



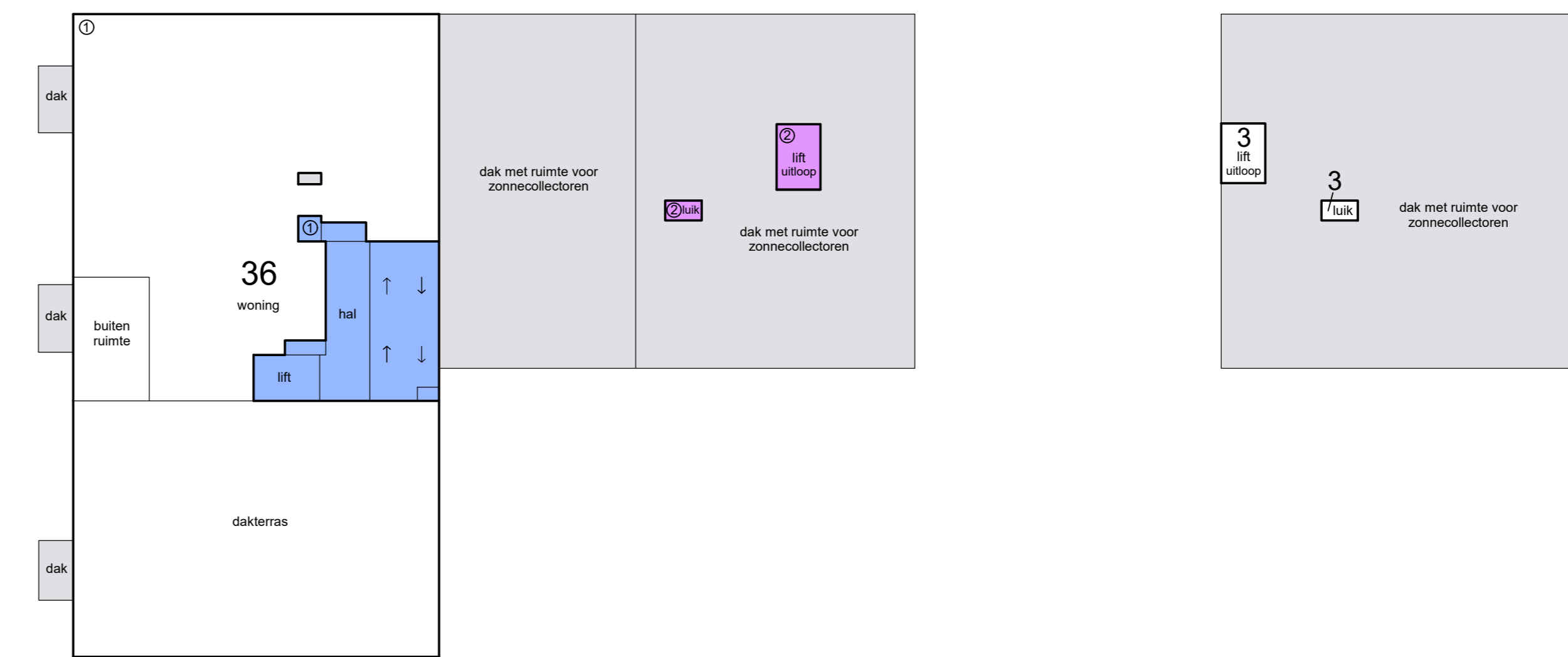
7e etage



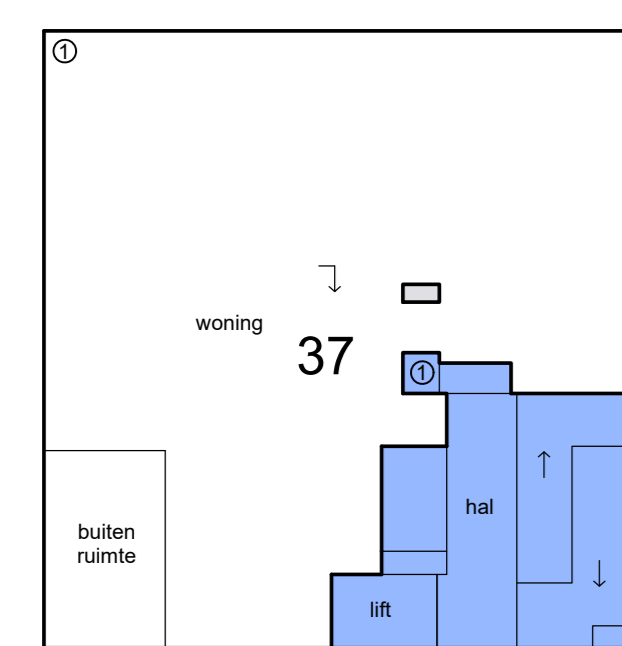
- Schaal 1 : 200
-  = Gemeenschappelijk hoofdsplitsing
 -  = Gemeenschappelijk ondersplitsing A1
 -  = Gemeenschappelijk ondersplitsing A2
- Tekening bestaat uit 3 bladen
Blad 3



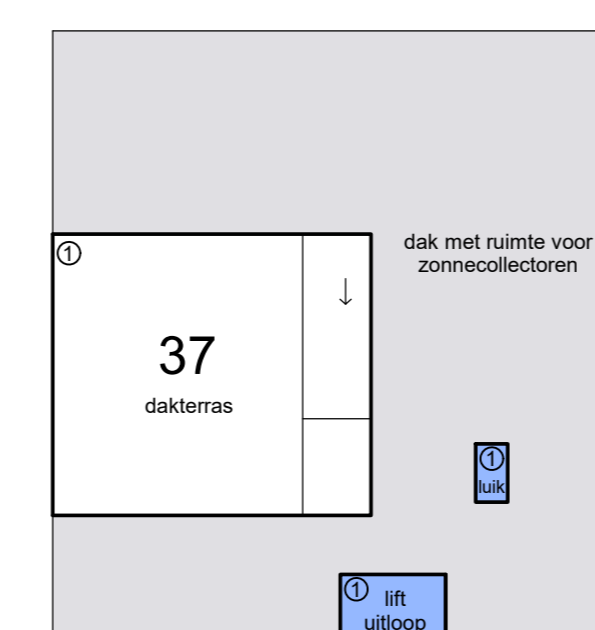
8e etage



9e etage



10e etage



dak